

Modeling Committee

Stakeholder Meeting

March 3, 2016

Greenville, SC

Committee Members

City of Greenville

- * Jacqueline Chelbezan (co-chair)
- * Clark Chewning
- * Clifton Bell

ReWa

- * Greg Wright
- * Angie Davis

Upstate Forever

- * Chris Starker

Home Builders Assoc. of Greenville

- * Richard Powers

WQR Facilitation Team

- * Tom Gallo

Greenville County

- * Flint Holbrook (co-chair)
- * Deb Sahoo
- * John Schooler

SCDHEC

- * Wade Cantrell
- * Wayne Harden

EPA Region IV

- * Alya Singh-White
- * Gracy Danois
- * Glen Fernandez
- * Craig Hesterlee
- * Tim Wool

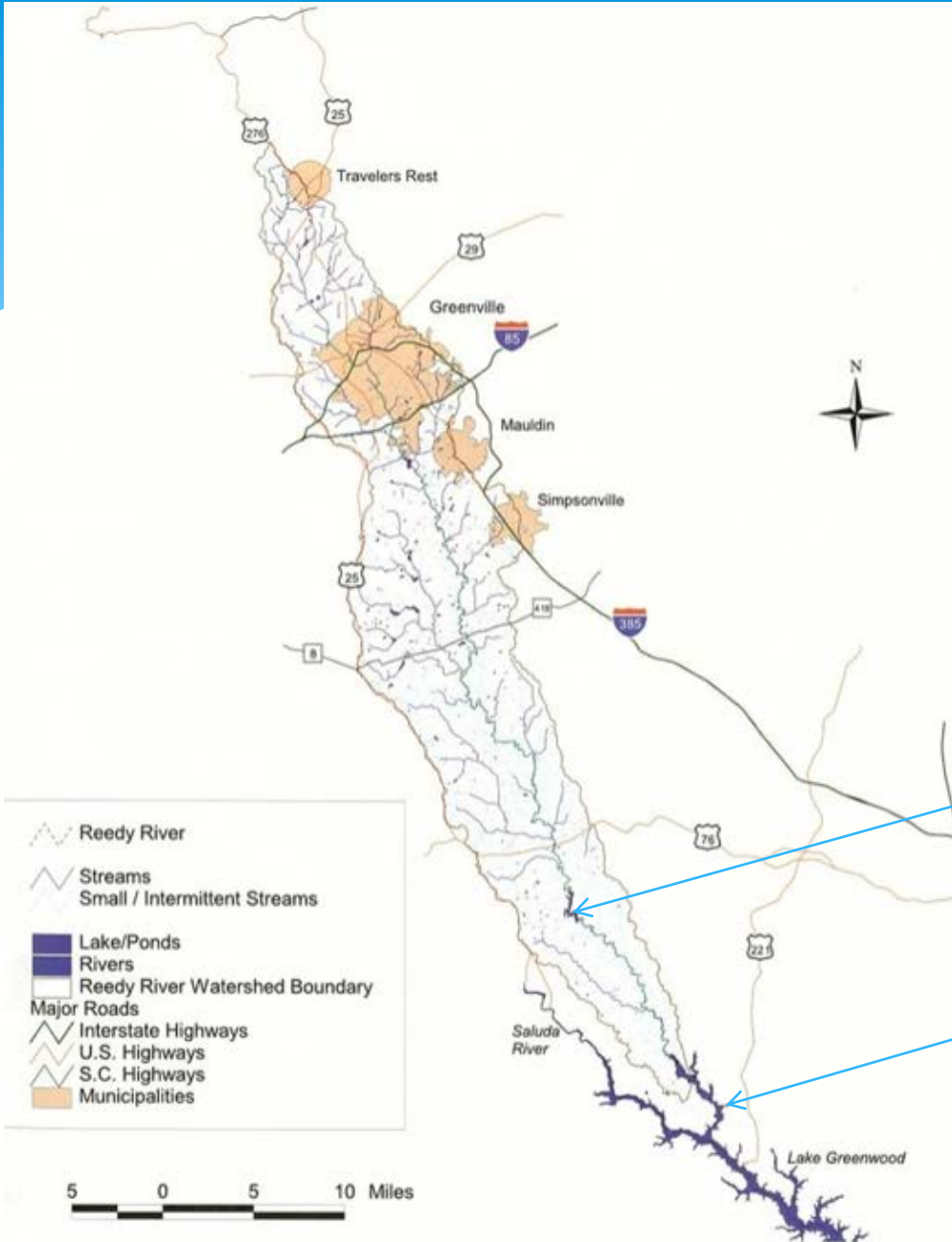
Committee Mission

- * Enhance existing EPA/DHEC watershed model through:
 - * Additional data collection
 - * Newer model versions
 - * Additional simulation capabilities (e.g., sediment transport)
 - * Improved calibration
 - * Validation
- * Improved model will enable the committee to:
 - * Appropriately characterize sources of Nitrogen and Phosphorus
 - * Determine impacts of best practices and watershed management on improving water quality to regulatory standards
 - * (Possibly) aid the development of water body-specific nutrient standards, if deemed appropriate

Examples of New Data to Be Collected

- * Updated meteorological data
- * Updated streamflow data
- * Updated land use data
- * Updated in-stream water quality data
- * Sediment nutrient flux
- * Sediment oxygen demand
- * Bathymetry data (Boyd Mill Pond)
- * Special parameter measurements (e.g., BOD decay rates)

New Data Collection Focused on Areas Upstream of Boyd Mill Pond



Boyd Mill Pond

Model domain extends to Reedy River arm of Lake Greenwood

Modeling Committee Goals

5R and WBP Requirements

- * Identify and establish Data Quality Objectives (e.g. modeling parameters and standards) to be used in current and future modeling
- * Identify Total Nitrogen and Total Phosphorus load reductions needed to meet water quality standards

2015 Activities

- * Meetings: Mar. 31 (Big Tent), Apr. 28, May 27, Jul. 23, and Aug. 27
- * Documented past water quality modeling efforts in the watershed and shared with other committees
- * Created draft Model Enhancement Plan
- * Documented currently available data and ongoing data collection efforts
- * Created Gap Analysis for data collection and monitoring and sent to Monitoring Committee
- * Helped Monitoring Committee develop monitoring recommendations

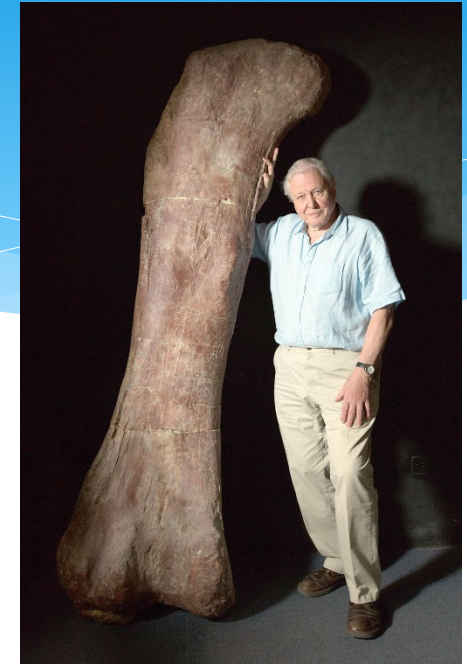
2016 Activities

- * Meeting so far: Jan 7
- * Correct versioning of models to be used
- * Create database of existing available data and update appropriate model inputs
- * Preliminary analysis of measured watershed data
- * Begin watershed model building process
- * Work with Monitoring Committee to continue to collect required information from the gap analysis
- * Establish data quality objectives

Wish List [to help meet milestones]

- * Involvement of Laurens and Greenwood Counties

Questions and Comments



Man standing next to a thigh bone

TITANOSAUR - LARGEST LAND ANIMAL IN HISTORY
Titanosaurs were a diverse group of sauropod dinosaurs, which included Saltasaurus and Isisaurus. When the extinction event at the end of the period occurred, they were the last surviving group of long-necked dinosaurs.

