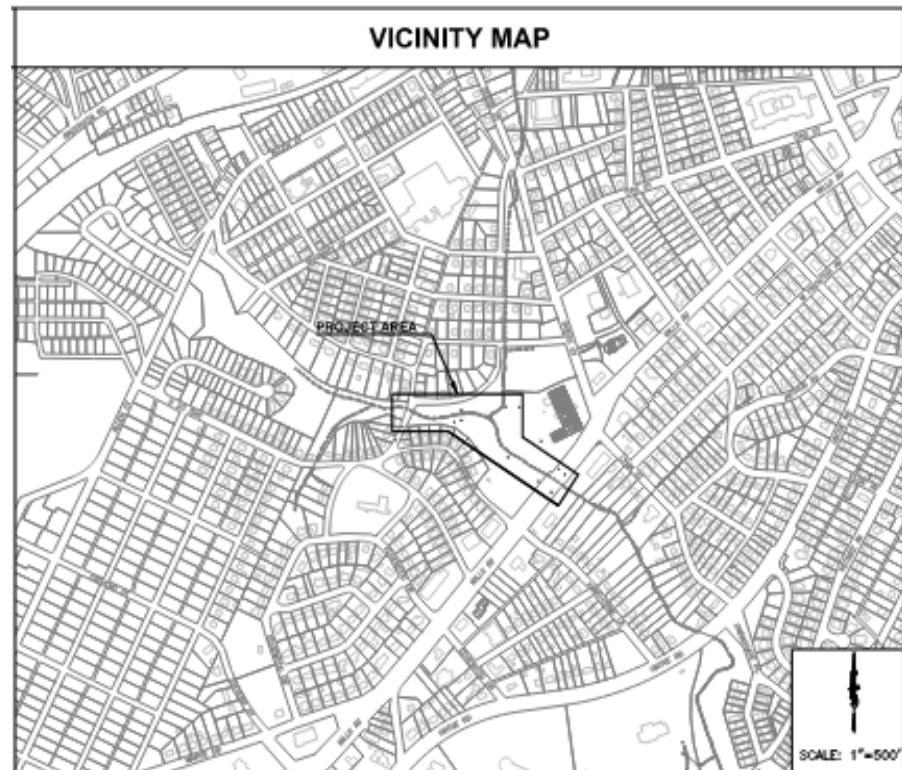


Brushy Creek Stream Restoration

BMP Demonstration Project

Project Location



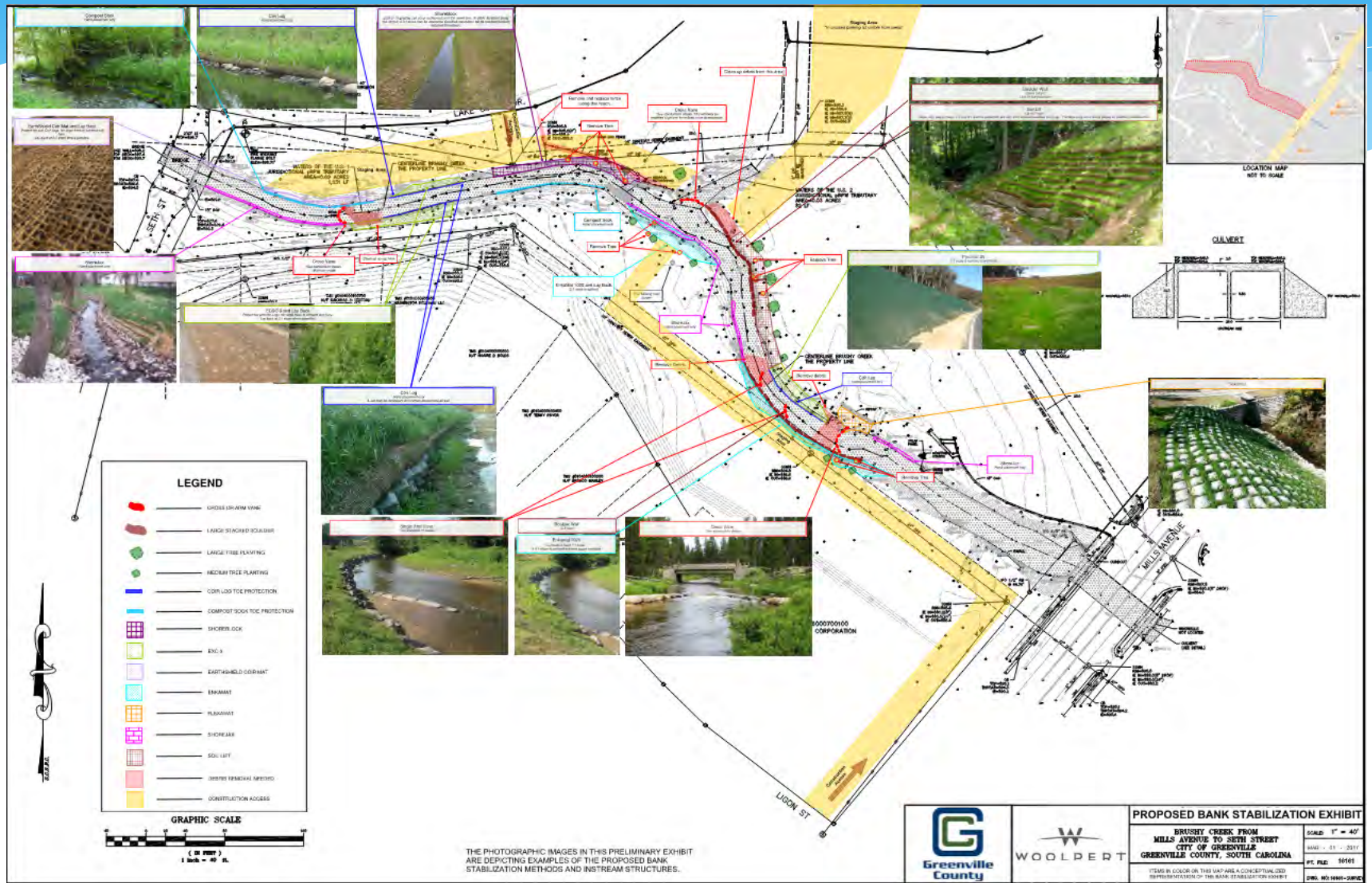
Mills Ave County Monitoring Station



Project Goal

- * Goal was to maximize the mature tree canopy with strategically placed improvements
- * Stabilize areas around two ReWa sewer lines with “green approaches”
- * Serve as a demonstration project trying multiple types of BMPs in an urban setting
- * Re-center the stream with in-stream cross vanes
- * Compare Coir logs, A-Jacks, Soil Lifts, Interlocking concrete block, stacked boulders, erosion control matting
- * Use Live stakings to stabilize streambanks and replace trees removed from The Loft side

Project Scope



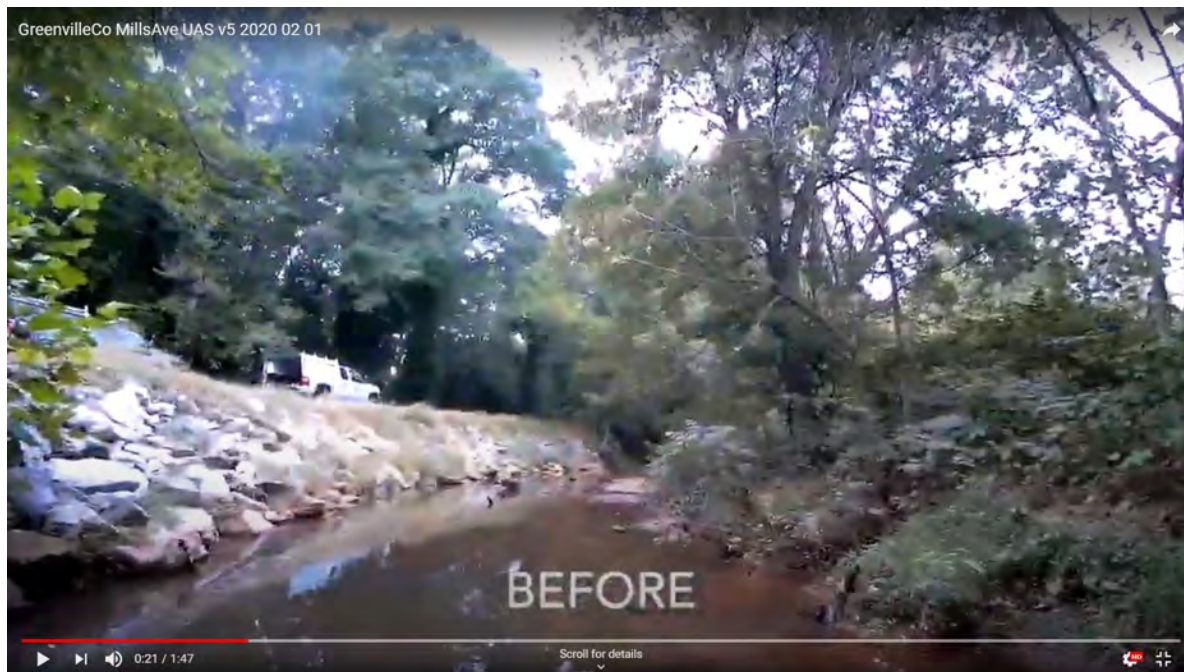
Project Timeline

- * Project idea developed in 2016 and approved by partners
- * January 2017 took concept plan to adjoining property owners and partners to get “buy in” on design
- * 90% Drawings completed September 2017
- * 1 year delay getting permission from Spinx’s Corp Office for Corp of Engineers permits
- * December 2018 Corp of Engineers Approval
- * June 2019 Easement agreement from property owners
- * Design Finalized November 2019
- * Sent to Procurement December 2019

View Video

* Link to video:

<http://cleanreedy.org/sbrvideo/>



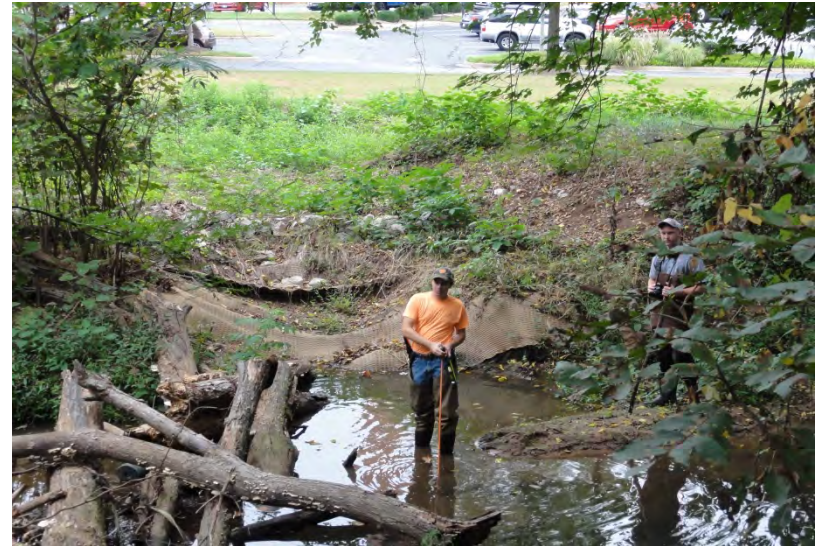
Reedy River
Water Quality Group



GreenvilleCo MillsAve UAS v5 2020 02 01



ReWa & Loft's Impacts



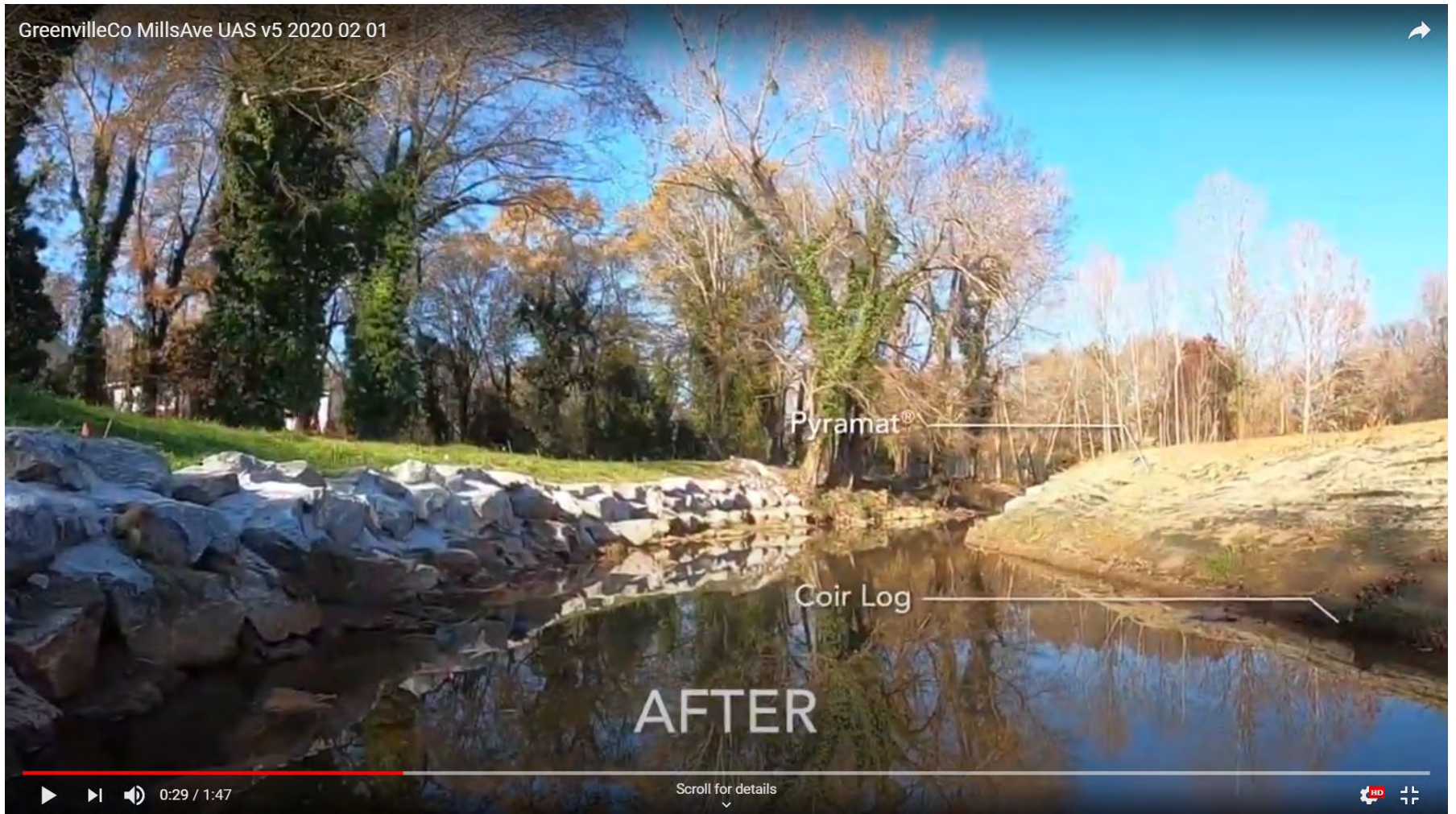
After

Boulder Wall & Enkamat



Flexamat





Coir Log & Pyramat





Reedy River
Water Quality Group



GreenvilleCo MillsAve UAS v5 2020 02 01



Boulder Wall and Soil Lifts



BEFORE

0:42 / 1:47

Scroll for details



Reedy River
Water Quality Group

Shoreblock®

Enkamat®

Cross Vane

A-Jacks®

AFTER

Play (k)

0:47 / 1:47

Scroll for details





Left side of Stream

A-jacks



Enkamat



Cross Vane



Tributary from City





Single Vane



ReWa Sewer



Shorelock Installation



GreenvilleCo MillsAve UAS v5 2020 02 01

BEFORE

1:00 / 1:47

Scroll for details

Reedy River
Water Quality Group

GreenvilleCo MillsAve UAS v5 2020 02 01

ECSC-3
Matting

ECSC-3
Matting

Coir Log

Coir Log/Compost
Sock Combination

AFTER

1:03 / 1:47

Scroll for details

ECSC-3
Matting

ECSC-3
Matting

Coir Log

Coir Log/Compost
Sock Combination

AFTER

▶ ⏮ 🔊 1:03 / 1:47

Scroll for details
▼



Coir Logs & ECSCC-3 Matting





Reedy River
Water Quality Group



Cross Vane





Reedy River
Water Quality Group

Compost Sock & Coir Matting



Plantings



Invasives!!!



Long Term Outcomes

- * Use Product survey and cost comparison for future designs
- * Regular Invasive treatment
- * Post Construction Stream Monitoring
- * Follow up field inspections



GreenvilleCo MillsAve UAS v5 2020 02 01



Reedy River
Water Quality Group

Questions

